

Expanding

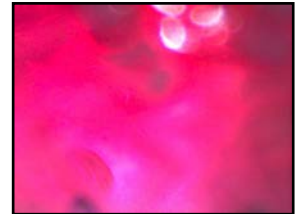
Gummy Bears

1. Having dissolved sugar and salt crystals and watched them reform using the time lapse function, one of the pupils suggested putting a Gummy Bear into water to see how it changed shape as it absorbed water.

2. On our first attempt, we put a whole Gummy Bear into the Petri Dish to see what would happen. The results are on the next page. Although it is possible to see the changes overnight, we thought that the whole Gummy Bear was perhaps too large for the microscope.



3. On our second attempt, we put only a Gummy Bear head into the Petri dish to see if we would get a clearer picture! However, the results were even more obscure!



4. When we evaluated our investigation, we decided that we could see the changes in the Gummy Bear more clearly with the naked eye. However, we still felt that using the microscope allowed us to look at the sugar coating and internal structure of the Gummy Bear in greater detail.

Expanding Gummy Bears

