

Real-world examples of TEM, STEM & cryo-EM research conducted by University of Leeds using EM Resolutions products.

Mrs Danielle McAll¹, Dr Nicole Hondow², Dr Zabeada Aslam²

¹EM Resolutions Ltd., Sheffield, United Kingdom. ²University of Leeds, Leeds, United Kingdom

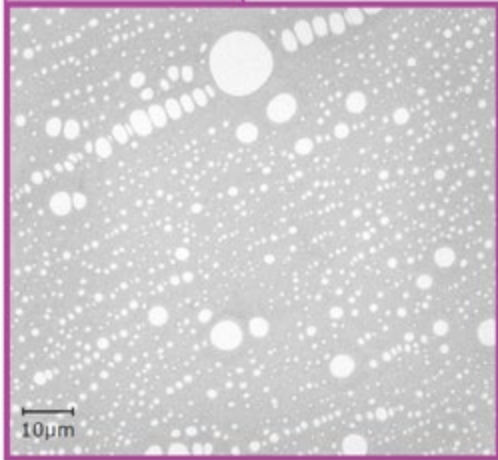
Abstract



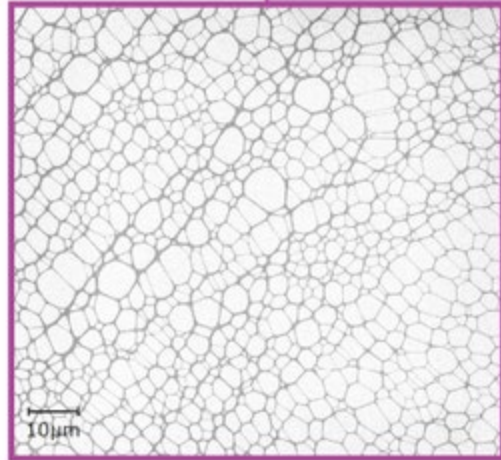
EM RESOLUTIONS
Supporting Electron Microscopy

In collaboration with the University of Leeds, this workshop will cover some real-world examples of current research into nanoparticles and nanomaterials across standard TEM, STEM and spectroscopy. Also discussed will be cryo-EM and how to make an informed decision on which TEM support film to use such as when to use Lacey Carbon or continuous Carbon films for soft materials or nano-materials in cryo-EM.

Holey carbon support film



Lacey carbon support film



For more information about EM Resolutions Ltd. products, click [here](#).